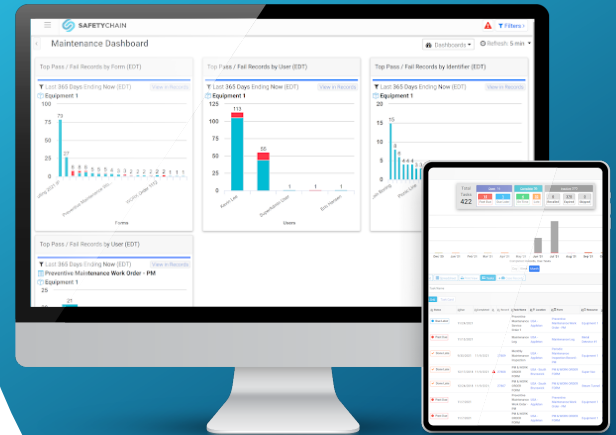


# MAINTENANCE



## A Simple Approach To Preventative Maintenance

Maintaining your equipment is critical to preventing unplanned downtime and optimizing operations. SafetyChain automates data capture from equipment, PLCs, SCADA, and sensors to guide maintenance activities and decisions. Inform operators and technicians with configurable alerts to capture information, including photos, and return lines to service rapidly.

## Continuously Improve Maintenance Operations

Use automated equipment checks to identify which machines need work and when. Startup, changeover, and unplanned production downtime can be configured to be displayed by affected equipment and reason code, allowing you to direct your technicians to the most urgent problems first. Make timely, effective decisions for preventative maintenance, repairs, and calibrations to increase the lifespan of your assets and maximize production time.

## Key Benefits

Extend equipment lifespan

Streamlined scheduling

Resource optimization

Organize work order management

Reduces downtime

Diminish documentation time

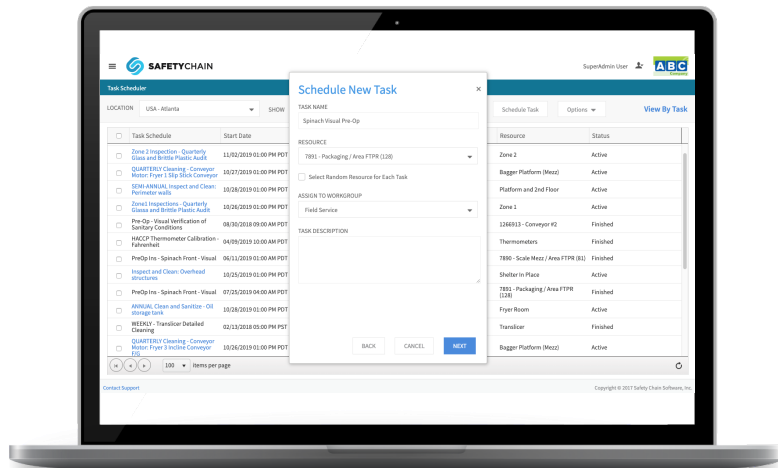
Speed up repairs & inspections

Enable regulatory compliance

Work order visibility

## Schedule Maintenance Tasks By Workgroups

Keep maintenance teams on track with facility-wide task scheduling. Centrally manage one-off work orders or recurring maintenance and calibration. Align employees on the plant floor with company goals through a user-friendly interface that sorts tasks by priority and due date to help workers stay on track.



### MAINTENANCE SOFTWARE Includes

**PREVENTATIVE MAINTENANCE PROGRAMS**



**CONTINUOUS IMPROVEMENT PROGRAMMING**



**NON-COMPLIANCE & EVENT COMPLETION ALERTS**



**AUTOMATED MAINTENANCE DATA COLLECTION**



**DOWNTIME MONITORING**



## About SafetyChain

SafetyChain is the #1 Plant Management Platform that improves yield, maximizes productivity, and ensures compliance for process manufacturers. Trusted by over 1,500 facilities, SafetyChain is the only enterprise solution uniting production, quality, safety, and supplier management.

## Get In Touch

safetychain.com  
info@safetychain.com  
888 235 7540