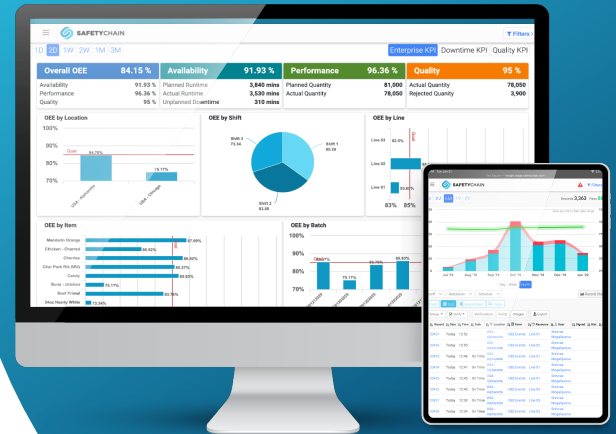


OVERALL EQUIPMENT EFFECTIVENESS (OEE)



Power Your Operations With Real-Time Analytics

OEE software helps you understand the full story about how your operations are running. SafetyChain takes the hassle out of tracking and trending data from equipment, PLCs, SCADA, and sensors and enables you to always have a pulse on your plant's operations.

Reach Your Plant's Full Potential

OEE software shows you how your plant is running against its full potential by measuring how much manufacturing time is actually productive. Leverage advanced analytics to get insights into production trends, planned production time, and downtime. Use these insights to uncover areas of opportunity and improve production performance.

Key Benefits

Real-time throughput or downtime issues

Visibility

Leverage IoT

Maximize operational capacity

Increase ROI on equipment

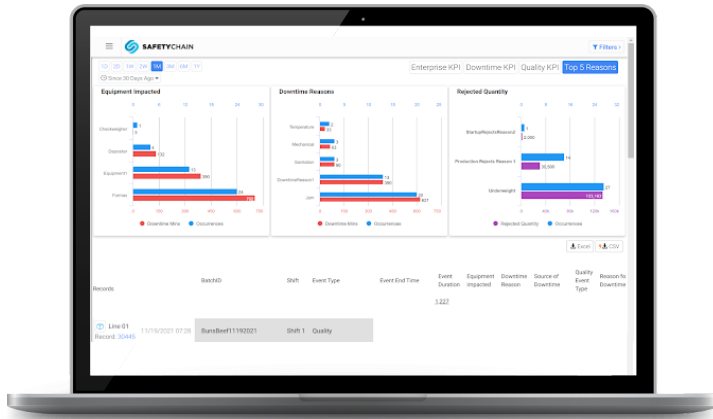
Reduce repair costs

Remove unnecessary paperwork

Uncover performance trends

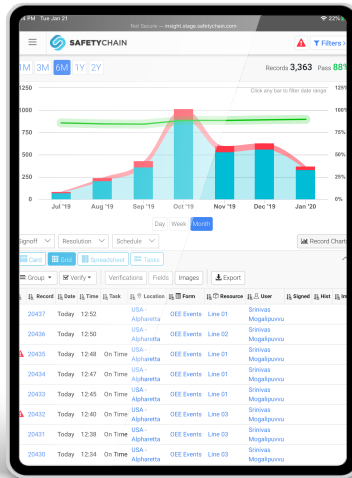
Isolate & mitigate bottlenecks

Automated data collection



Uncover Root Causes To Prevent Problems

Eliminate bottlenecks by tracking OEE scores by line, shift, or other attributes. With the ability to identify the origins of production issues in real-time, you can address problems quickly before they escalate—and prevent them from happening again.



About SafetyChain

SafetyChain is the #1 Plant Management Platform that improves yield, maximizes productivity, and ensures compliance for process manufacturers. Trusted by over 1,500 facilities, SafetyChain is the only enterprise solution uniting production, quality, safety, and supplier management.

Get In Touch

safetychain.com
 info@safetychain.com
 888 235 7540

OEE
 SOFTWARE
 Includes

LIVE OEE
 MONITORING



DOWNTIME &
 SLOWDOWN EVENT
 ANALYSIS



ENTERPRISE
 PERFORMANCE
 DASHBOARDS



OEE TREND &
 SCORECARD



MONITOR
 LINES & SHIFTS

